

# **ModifRoundtrip Documentation**

-

## **Import Test and Tool Project**

*This document explains the steps for importing test projects into ModifRoundtrip*

May, 2015

by Paola Vallejo, Jean Philippe Babau

## Table of contents

<b>1. Import test projects</b> .....	<b>3</b>
Prerequisites.....	3
Projects import.....	3
Projects dependencies.....	4
Xtext Nature.....	4
Tool Compilation.....	5

# 1. Import test projects

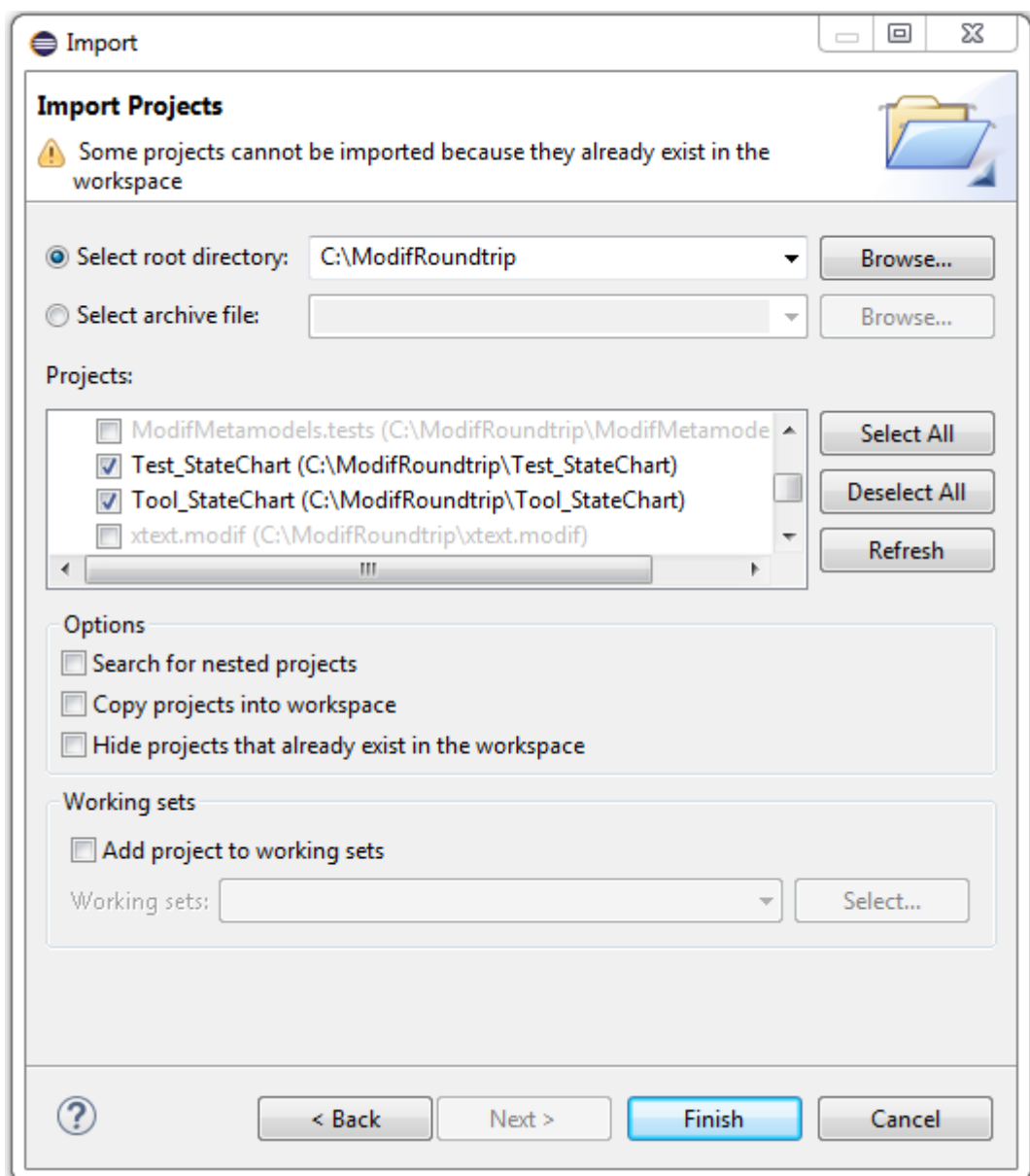
## Prerequisites

- The ModifRoundtrip project installed and ready to be used

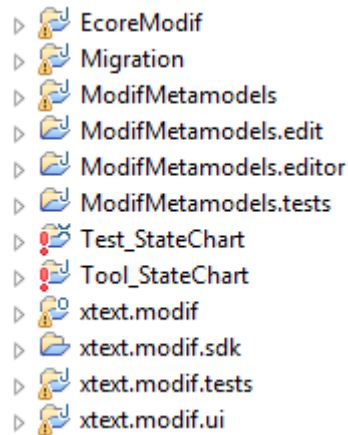
## Projects import

After downloading and unzipping the test and tool projects, import them into your workspace

File → Import → General/Existing projects to workspace → Next → [select your ModifRoundtrip workspace] → [select the projects to import] → Finish



The projects will appear in the Package Explorer



## Projects dependencies

Edit (and add if necessary) the dependencies for the *Test* project

Right click Test project → Build Path → Configure Build Path

Projects:

- Migration

Libraries:

- org.eclipse.emf.ecore.xmi

Edit (and add if necessary) the dependencies for the *Tool* project

Right click Tool project → Build Path → Configure Build Path

Projects:

- Migration

Libraries:

- org.eclipse.emf.ecore.xmi
- org.eclipse.swt
- org.eclipse.swt.PLATFORM\_specific (for Windows) or org.eclipse.swt.gtk.linux.PLATFORM\_specific (for Linux)

The corresponding *jar* files are in the *plugins* directory of your Eclipse installation. You need to have the above indicated dependencies (here PLATFORM\_specific is win32)

## Xtext nature

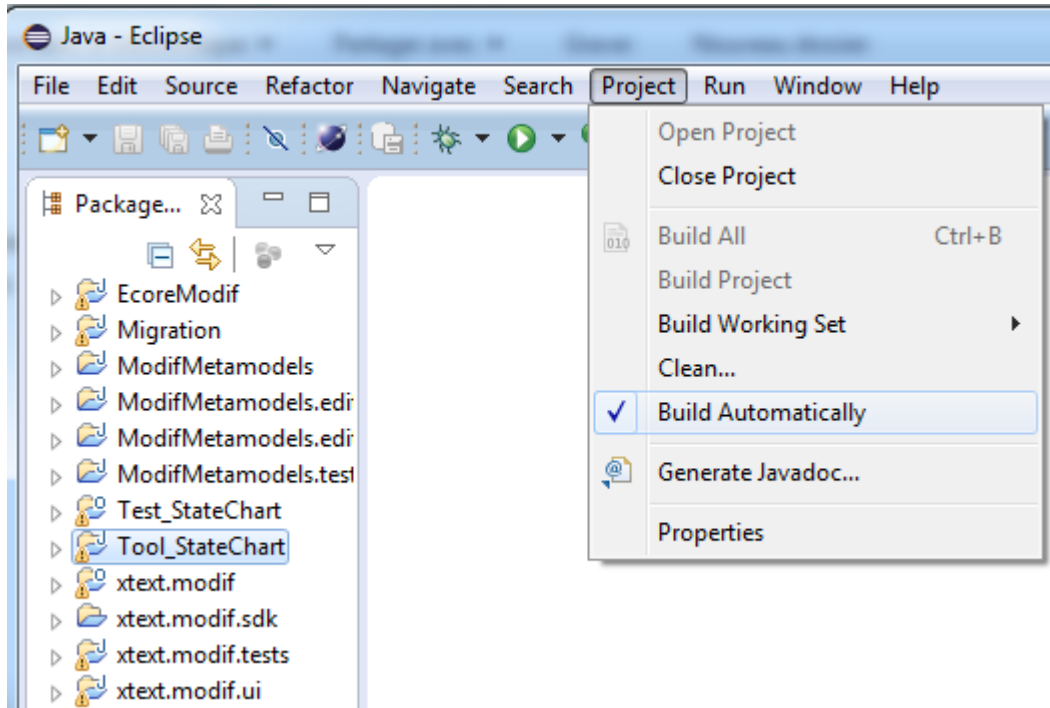
Add the Xtext Nature to the Test project

Right click Test project → Configure → Add Xpand/Xtext Nature

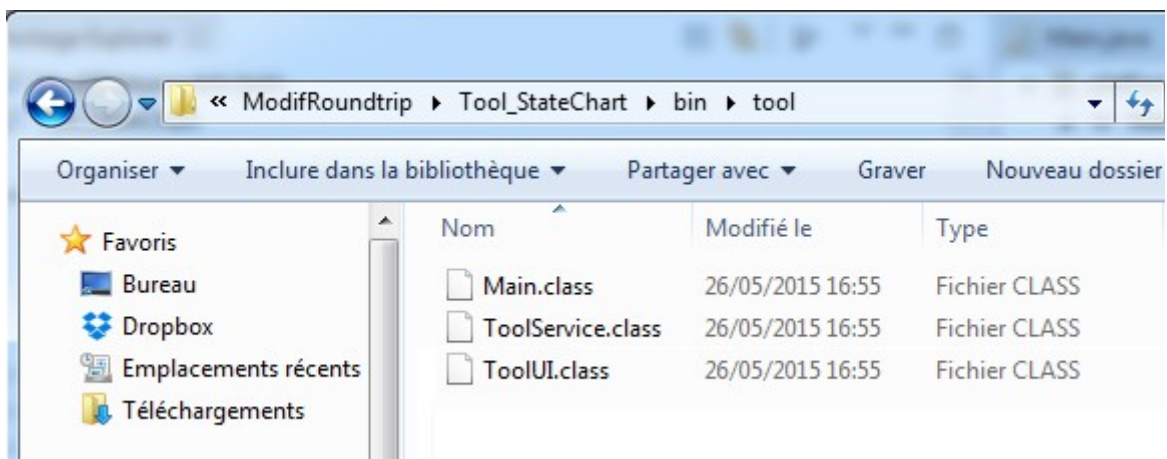
## Tool compilation

Compile the *Tool* project by applying the next steps

Click on Project Menu → Build Automatically



The CLASS files (.class) corresponding to the classes of the *Tool* project will appear in its *bin* folder



**Test and Tool projects are now ready to be used**